



# About Uma Udyog

---

UMA UDYOG was founded in 1986 with the vision of providing high-quality iron and steel products. Over the years, the company has become a trusted name in the manufacturing of scaffolding structures and structural components. Specializing in products such as Cuplock systems, scaffolding planks, fixed and swivel couplers, base plates, and more, UMA UDYOG is synonymous with precision and reliability.

UMA UDYOG's unwavering commitment to quality, timely delivery, and customer satisfaction has solidified its reputation in the iron and steel manufacturing sector. With decades of expertise and a steadfast dedication to excellence, UMA UDYOG continues to empower the construction industry with superior solutions.

## Our Product Portfolio

- Mild Steel Scaffolding Plank
- Galvanized Scaffolding Plank
- Solar Walkway Plank
- Galvanized Toe Guard
- Shuttering Plate
- Haunch Plate
- Steel Door Frame
- False Ceiling Channel
- Rolling Shutter Side Channel
- MS Scaffolding Cuplock Ledger
- Scaffolding Base Plate
- MS Scaffolding Fixed Coupler
- MS Scaffolding Swivel Coupler
- MS Scaffolding Cup lock Standard
- Mild Steel Shuttering Jali
- Sheet Bending Job Work
- GI (Galvanized Iron) Sheets
- CRC (Cold Rolled Coil) Sheets
- HR (Hot Rolled) Sheets
- Storage Racks / Kitchen Racks



## Mild Steel Scaffolding Plank

### Description:

Made from premium mild steel, these planks provide a sturdy base for construction workers and equipment. Precision-engineered for enhanced load-bearing capacity.

### Features:

High durability, slip-resistant surface

### Applications:

Ideal for scaffolding systems in construction and maintenance projects.



**Thickness :** 1mm-3mm

## Galvanized Scaffolding Plank

### Description:

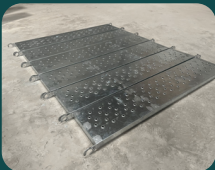
Crafted from high-quality galvanized steel, these planks offer superior rust resistance and longevity.

### Features:

Galvanized finish for enhanced weather and corrosion resistance, reinforced edges for added strength.

### Applications:

Suitable for outdoor and humid conditions, including bridge construction and high-rise building projects.



**Thickness :** 1mm-3mm

## Solar Walkway Plank

### Description:

Specially designed planks that can withstand high exposure to sunlight, with added anti-slip properties to ensure safety in solar panel fields.

### Features:

UV-resistant coating, anti-slip surface, durable under high temperatures.

### Applications:

Designed for use in solar power installations and renewable energy infrastructure projects.



**Thickness :** 1mm-3mm

**Material :** Galvanised Iron, Galvalume

**GSM :** 80 GSM, 90GSM, 100GSM, 275GSM



## Galvanized Toe Guard



### Description:

Protects workers from falling tools and debris on scaffolding. Made from galvanized steel for lasting durability.

### Features:

Lightweight, corrosion-resistant, easy to install.

### Applications:

Essential for construction and industrial scaffolding safety.



# Shuttering Plate

## Description:

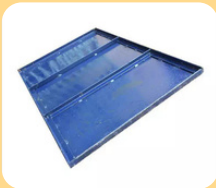
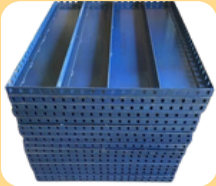
These plates form a temporary structure to hold concrete in place while it sets, ensuring a smooth and level finish.

## Features:

High load-bearing capacity, multiple thickness options, durable construction.

## Applications:

Widely used in slab, beam, and column formwork for concrete construction, buildings, and flyovers.



**Thickness :** 1mm-3mm

# Haunch Plate

## Description:

Support plates used to strengthen the joints and provide stability in concrete structures.

## Features:

Robust construction, precise angles for secure fitting, rust-resistant finish.

## Applications:

Suitable for bridge, highway, and other structural applications requiring added reinforcement.



## Steel Door Frame

### Description:

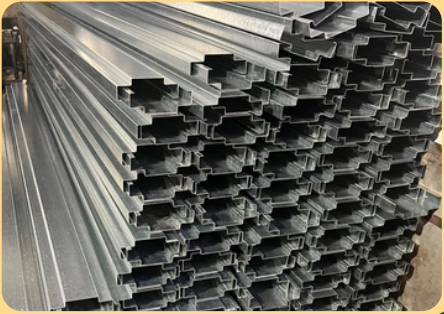
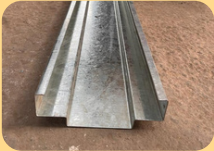
Durable and secure, these steel door frames are precision-engineered for strength and easy installation.

### Features:

Available in various sizes, corrosion-resistant coating, and robust structure.

### Applications:

Ideal for industrial, residential, and commercial building entrances.



## False Ceiling Channel

### Description:

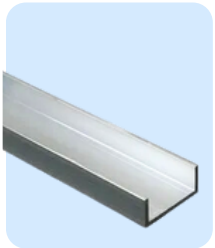
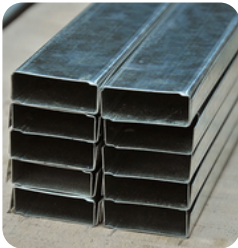
Made for constructing a suspended ceiling system, offering support for acoustic tiles or panels.

### Features:

Lightweight, easy to install, high load-bearing capacity.

### Applications:

Perfect for offices, retail spaces, and residential false ceiling installations.



## Rolling Shutter Side Channel

### Description:

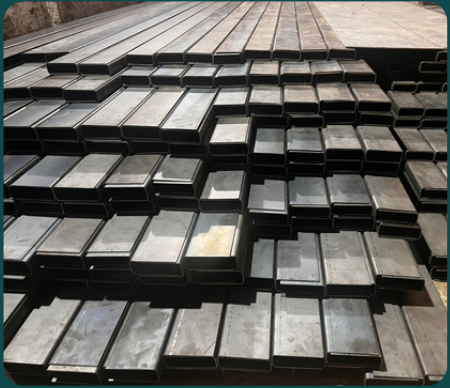
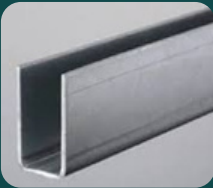
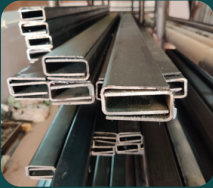
Provides side support and smooth operation for rolling shutters, made from durable steel for enhanced stability.

### Features:

High strength, easy installation, weather-resistant finish.

### Applications:

Used in rolling shutters for industrial and commercial door solutions.



## MS Scaffolding Cuplock Ledger

### Description:

Essential component in scaffolding systems, providing horizontal support between Cuplock standards.

### Features:

Quick locking mechanism, durable mild steel construction, high load capacity.

### Applications:

Suitable for multi-level scaffolding in building construction and maintenance projects.



# Scaffolding Base Plate

**Description:**

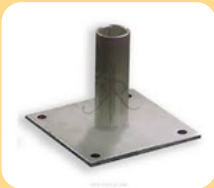
A foundational plate used at the base of scaffolding to distribute weight evenly and provide stability.

**Features:**

Anti-slip design, corrosion-resistant, sturdy construction.

**Applications:**

Ideal for construction projects requiring stable and secure scaffolding systems



# MS Scaffolding Fixed Coupler

**Description:**

Connects scaffolding tubes at a fixed angle to provide good structural stability.

**Features:**

Strong mild steel build, precision welding, rust-resistant coating.

**Applications:**

Commonly used in fixed angle connections within scaffolding frameworks.





## MS Scaffolding Swivel Coupler

### Description:

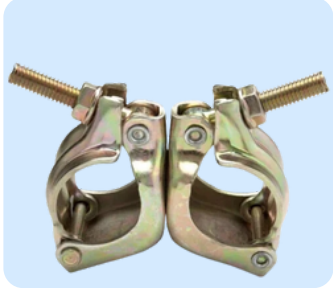
Allows scaffolding tubes to connect at various angles, adding flexibility to scaffold design.

### Features:

Swivel joint for versatile angles, robust mild steel construction, anti-rust coating.

### Applications:

Essential for complex scaffolding configurations and angled support.



## MS Scaffolding Cup lock Standard

### Description:

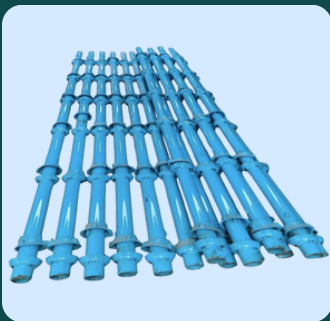
A vertical component in the Cup lock scaffolding system that supports ledgers at regular intervals.

### Features:

Quick assembly with secure locking system, high durability, mild steel construction.

### Applications:

Widely used in large construction projects for quick and efficient scaffolding setup.



## Mild Steel Shuttering Jali



### Description:

Mesh sheets used in concrete shuttering to support concrete and prevent seepage.

### Features:

Reinforced structure, durable mild steel material, easy for installation

### Applications:

Commonly used in casting concrete slabs, beams, and foundations.



## Sheet Bending Job Work

### Description:

UMA UDYOG offers precision sheet bending services tailored to meet diverse industrial and commercial needs. Using advanced bending machines, we provide accurate bends for various sheet metals.

### Features:

Precise bending angles, high-quality finishes, customizable for different thicknesses and materials.

### Applications:

Ideal for components in construction, automotive, and fabrication industries, including structural supports, panels, and frames.



# GI (Galvanized Iron) Sheets

**Description:**

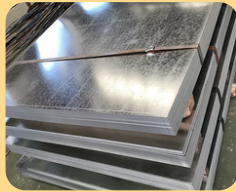
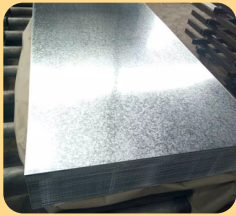
High-quality galvanized iron sheets that offer excellent corrosion resistance and durability. These sheets are ideal for outdoor applications and high-exposure environments.

**Features:**

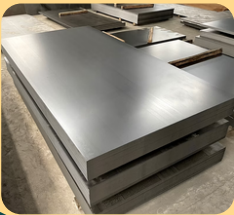
Corrosion-resistant zinc coating, available in various thicknesses, weatherproof.

**Applications:**

Suitable for roofing, cladding, fencing, and various industrial applications requiring rust-resistant materials.



# CRC (Cold Rolled Coil) Sheets



**Description:**

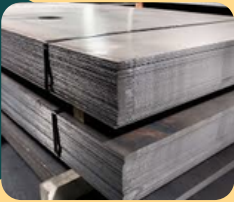
Cold rolled coil (CRC) sheets are known for their smooth finish, precision thickness, and superior strength. These sheets are cold-processed for dimensional accuracy and a clean, aesthetic finish.

**Features:**

High surface finish, excellent formability, uniform thickness.

**Applications:**

Used in precision engineering, automotive parts, home appliances, and furniture manufacturing.



# HR (Hot Rolled) Sheets

**Description:**

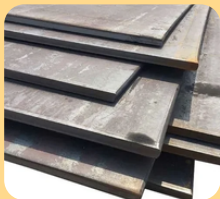
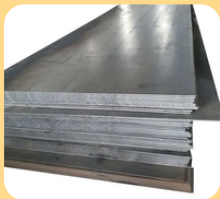
Hot rolled sheets provide high strength and flexibility, making them ideal for heavy-duty applications. Produced at high temperatures, these sheets are durable and versatile.

**Features:**

High malleability, robust build, available in thicker gauges for heavy-duty applications.

**Applications:**

Suitable for structural applications, machinery, large equipment, and heavy construction projects.



## Storage Racks / Kitchen Racks

### Description:

Durable and space-efficient storage racks designed for organizing items in kitchens, warehouses, and retail spaces. These racks are built to handle heavy loads while maintaining stability.

### Features:

Sturdy steel construction, corrosion-resistant finish, available in various sizes and configurations.

### Applications:

Ideal for kitchen organization, pantry storage, warehouses, retail displays, and inventory management.



Each product is designed with durability, safety, and efficiency in mind, crafted to meet industry standards and UMA UDYOG's commitment to quality. Contact us for quotes, custom dimensions, or further details on any item.



# UMA UDYOG



+91-8368438743



[www.umaudyogironandsteel.com](http://www.umaudyogironandsteel.com)



[umaudyogironfabricators@gmail.com](mailto:umaudyogironfabricators@gmail.com)